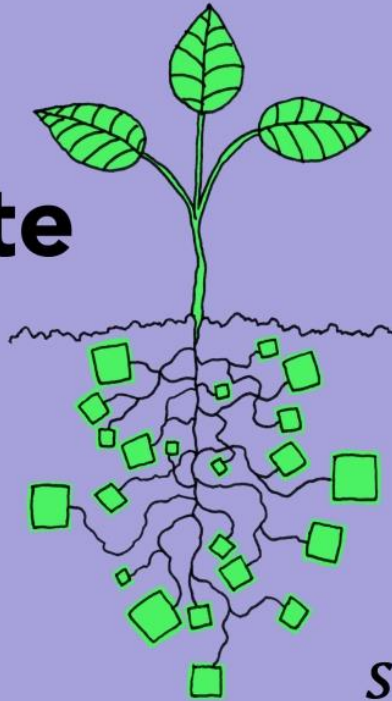


# Welcome back to our new adventure! :)

**Why do  
plants hate  
math?**



Because it  
gives them  
*square* roots.

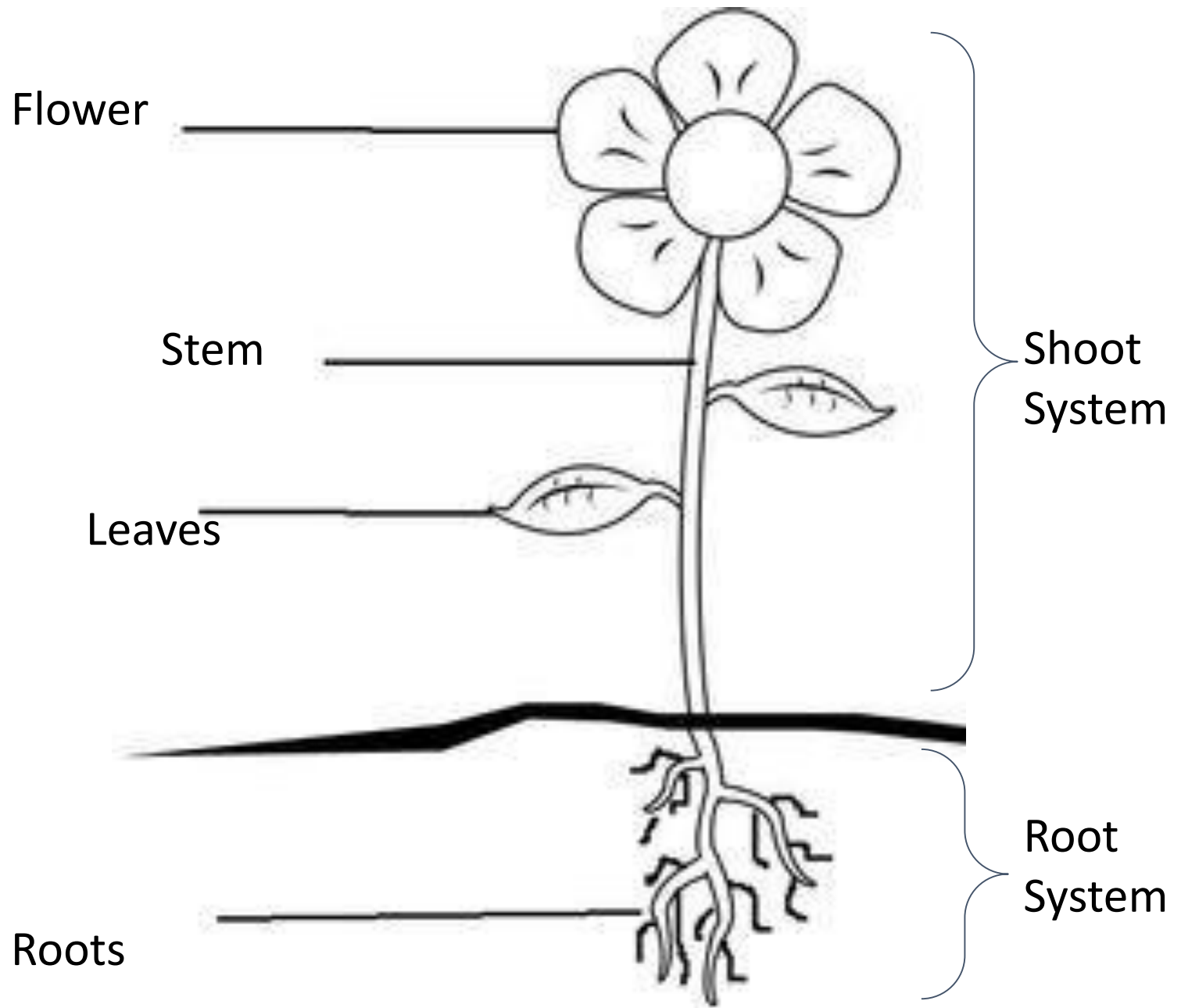
## Content Objective

I will describe the interactions that occur among systems of plants by completing a graphic organizer

## Language Objective

I will write and speak using the following terms:

Roots, shoot system, xylem, phloem, and stem



# Root/Root hair

- **Absorb/Transport** water and nutrients  
Hairs give it more surface area to collect
- **Anchor** plant to the ground
- Hold soil in place and **prevent erosion**



# Shoots

- All parts of the plant that are not roots

# STEM

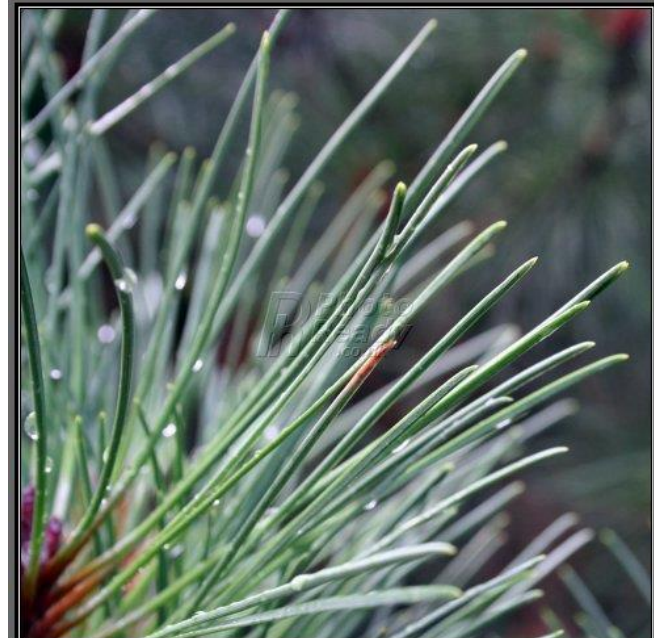
- Support for the plant body
- Carries nutrients throughout plant





# Leaves

- Main photosynthetic systems
- Site of gas exchange



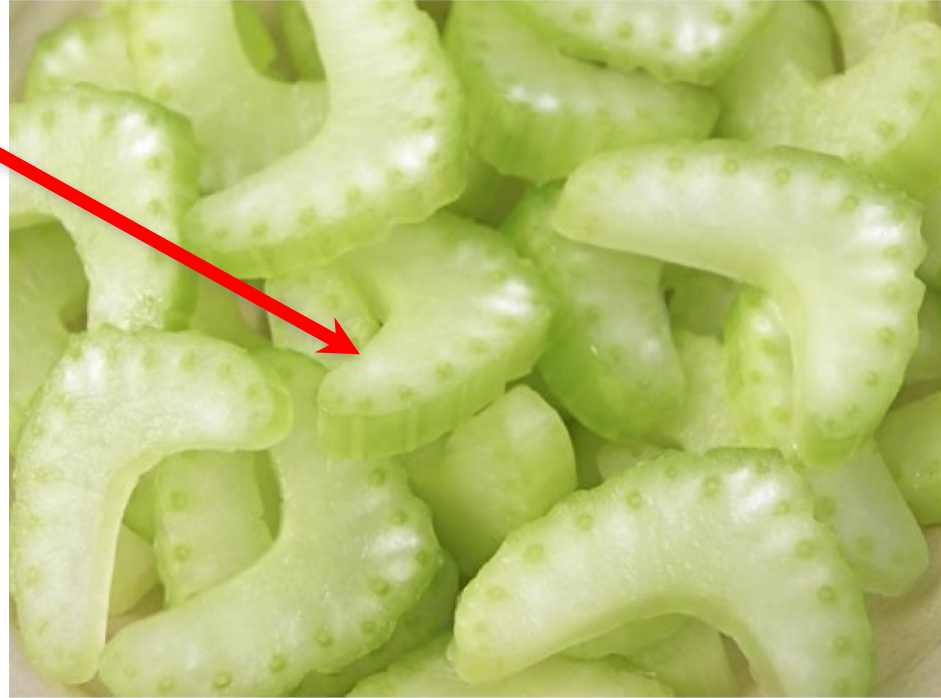
# Flowers

- Site of reproduction in plants



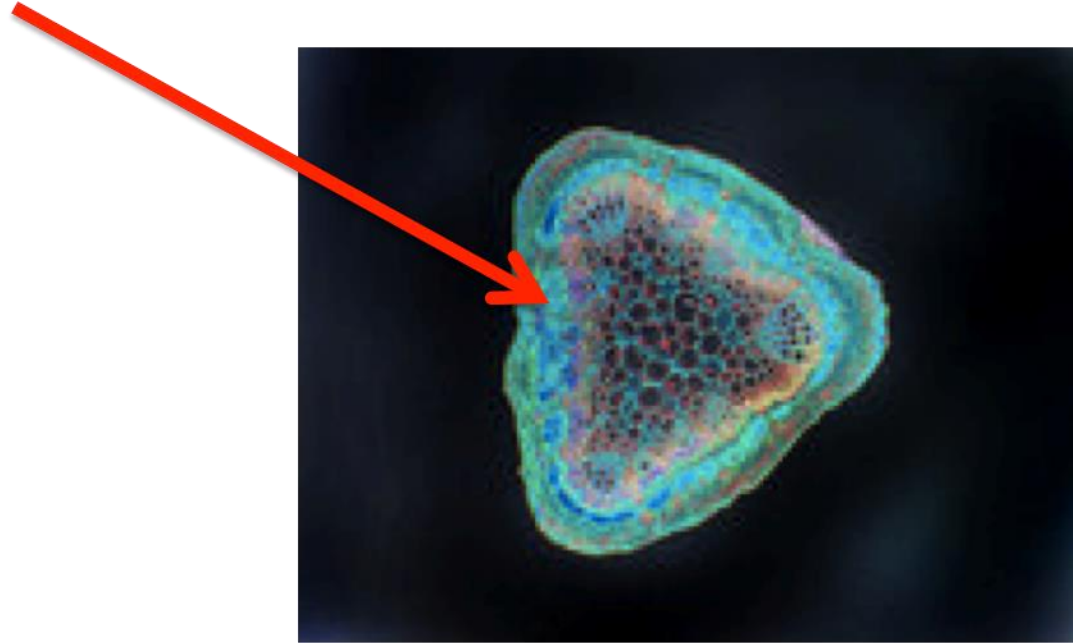


# Xylem



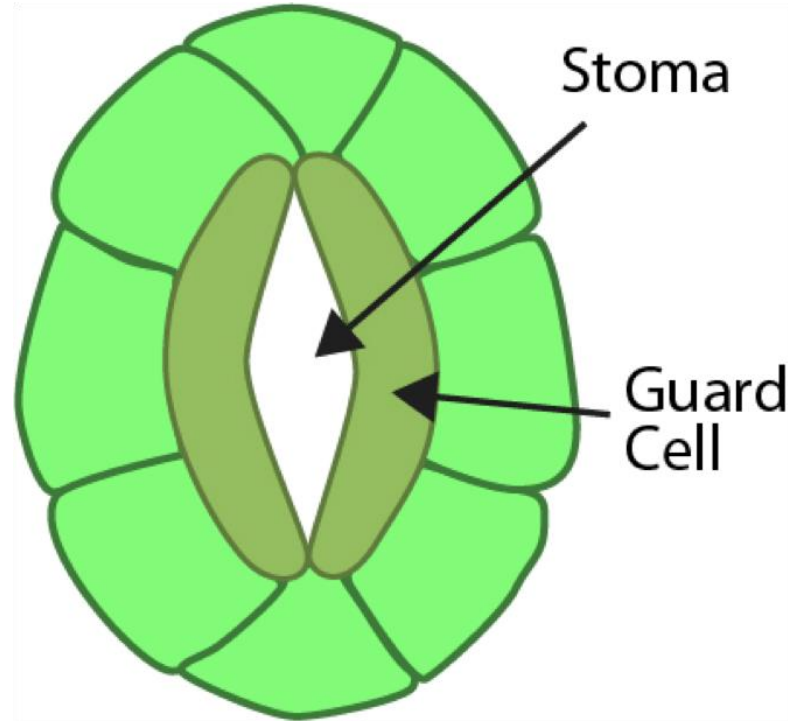
Plant tissue that transports water absorbed in roots throughout the plant.

# Phloem



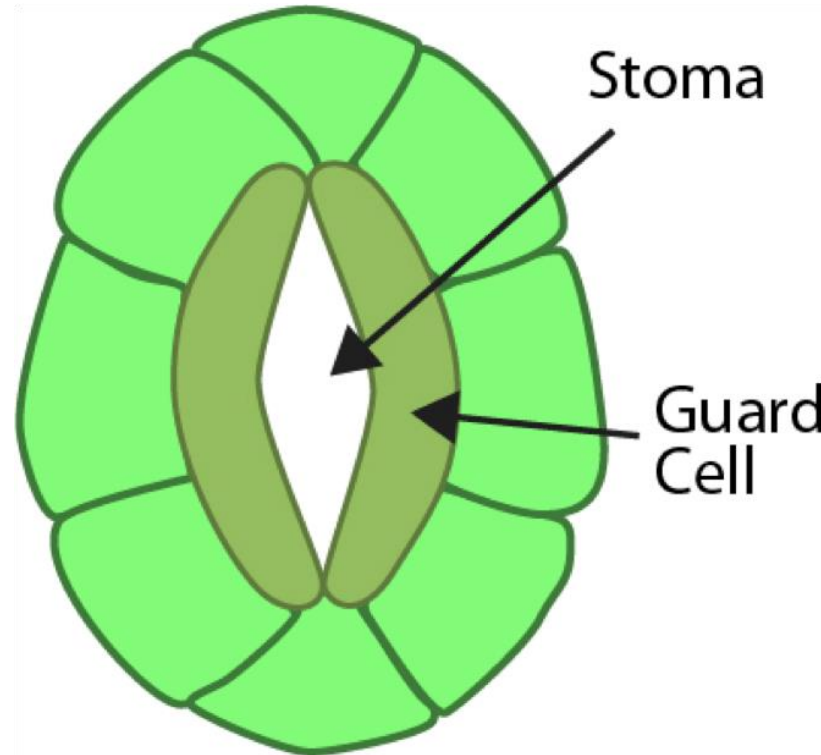
Plant tissue that transports sugars produced by the leaves throughout the plant.

# Guard Cells



Cells surrounding the stoma that regulate the size of the stoma.

# Stoma



A tiny pore in the epidermis of a leaf used for gas exchange.

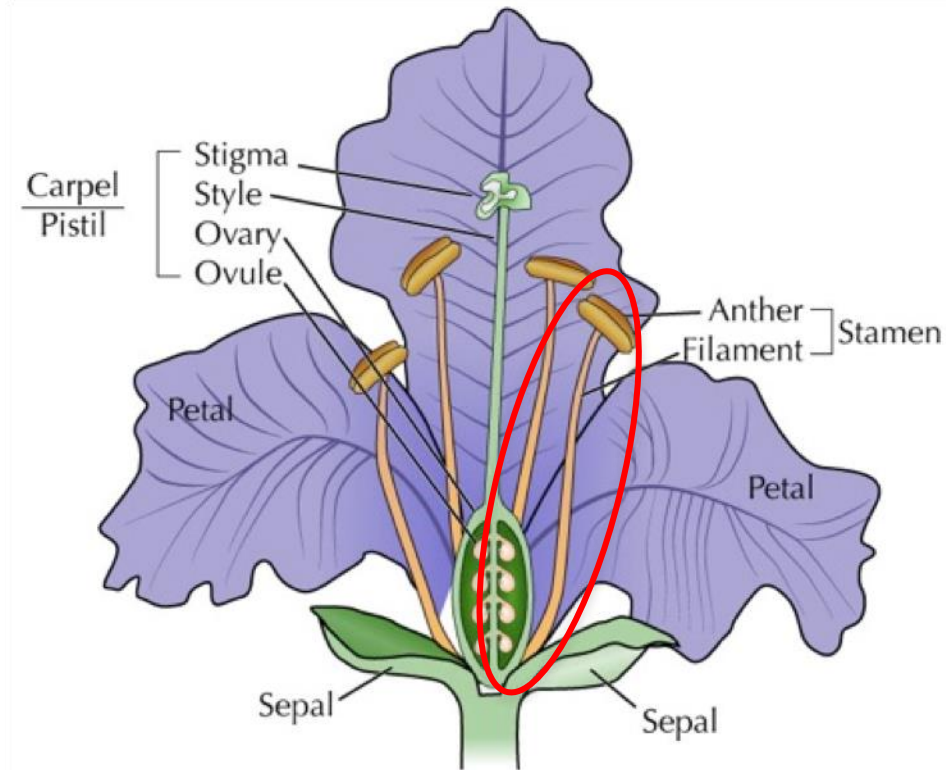
# Pollination



The transfer of pollen from the anther to the stigma in flowering plants.

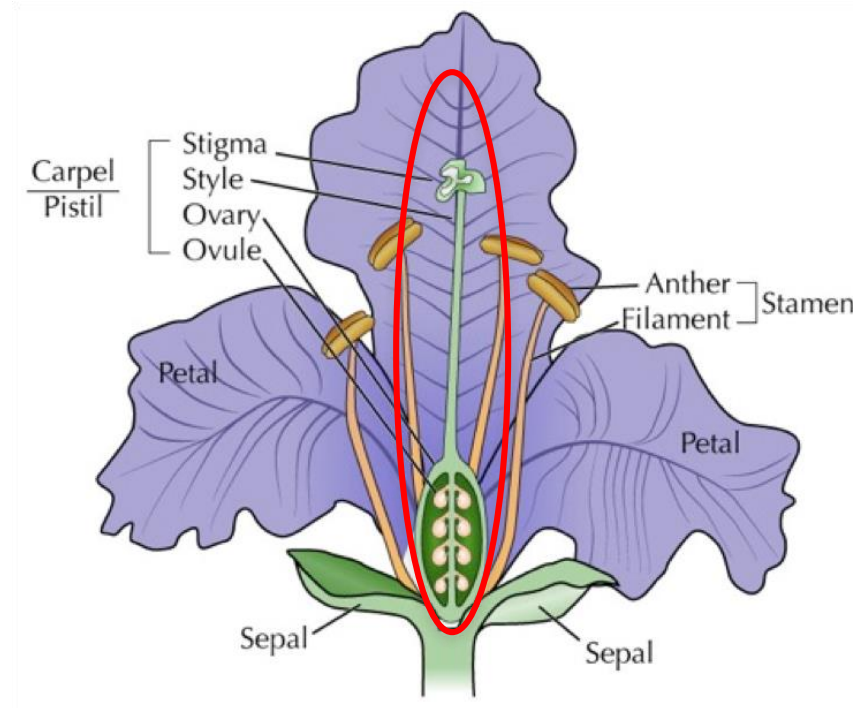


# Stamen



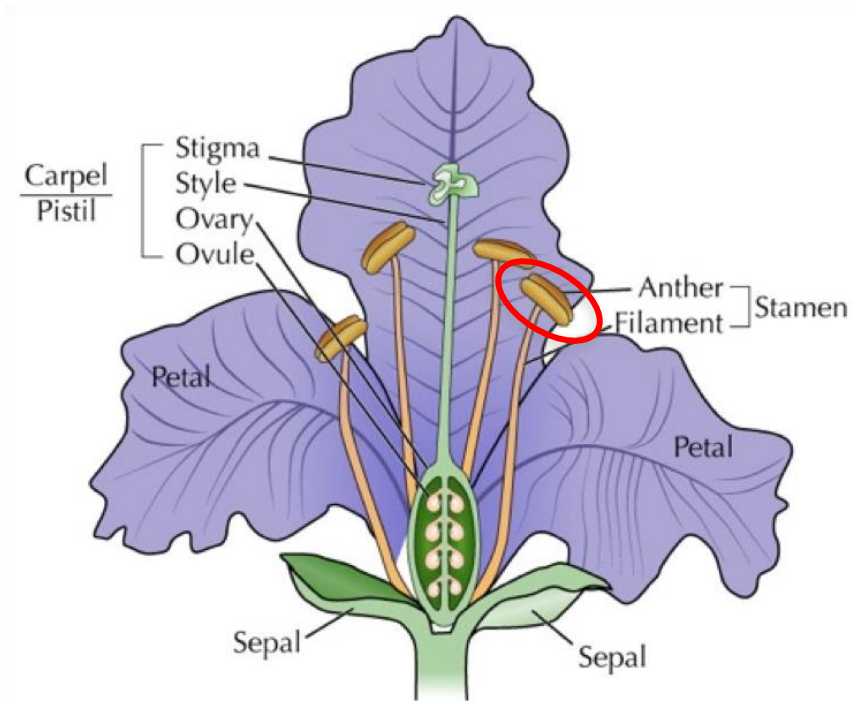
The male reproductive structure of a flowering plant; consists of the anther and the filament.

# Pistil



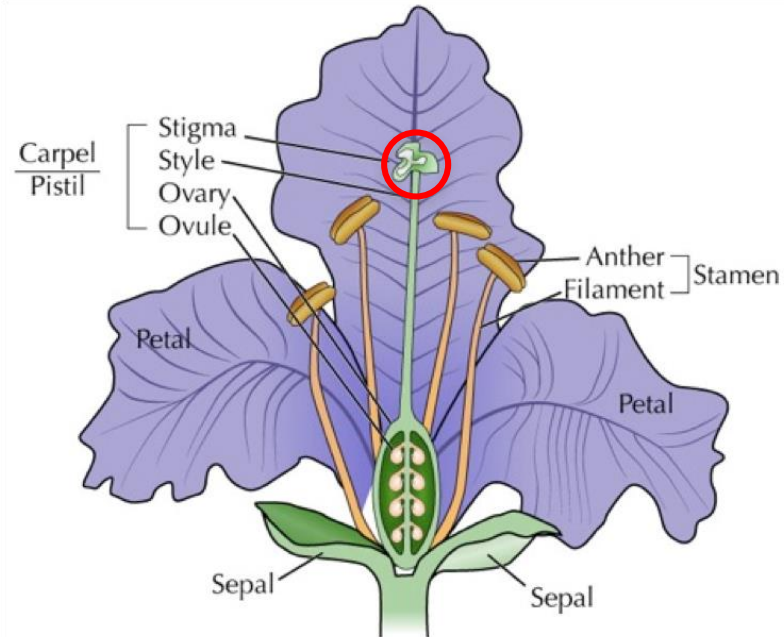
The female reproductive structure of a flowering plant; consists of the stigma, style, and ovary.

# Anther



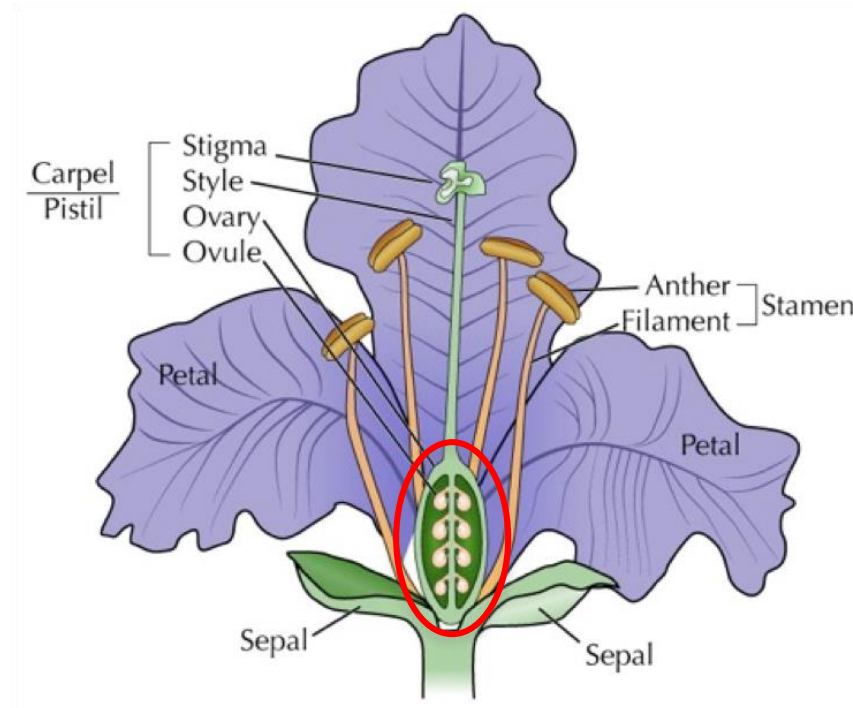
The portion of the male reproductive structure of a flowering plant that contains pollen (the male gamete).

# Stigma



The sticky tip of the female reproductive structure of a flowering plant; captures pollen for the purpose of pollination.

# Ovary



An organ that produces female gametes (ova).



# Wednesday March 18

**Why couldn't the gardener plant any flowers?**

**He hadn't botany :)**

# Germination



The process of sprouting and growing.

# Gravitropism



A plant's ability to orient its growth towards (roots) or away from (stems) the Earth.

# Phototropism



The ability of plants and some fungi to grow toward or away from a light source.

# Thigmotropism

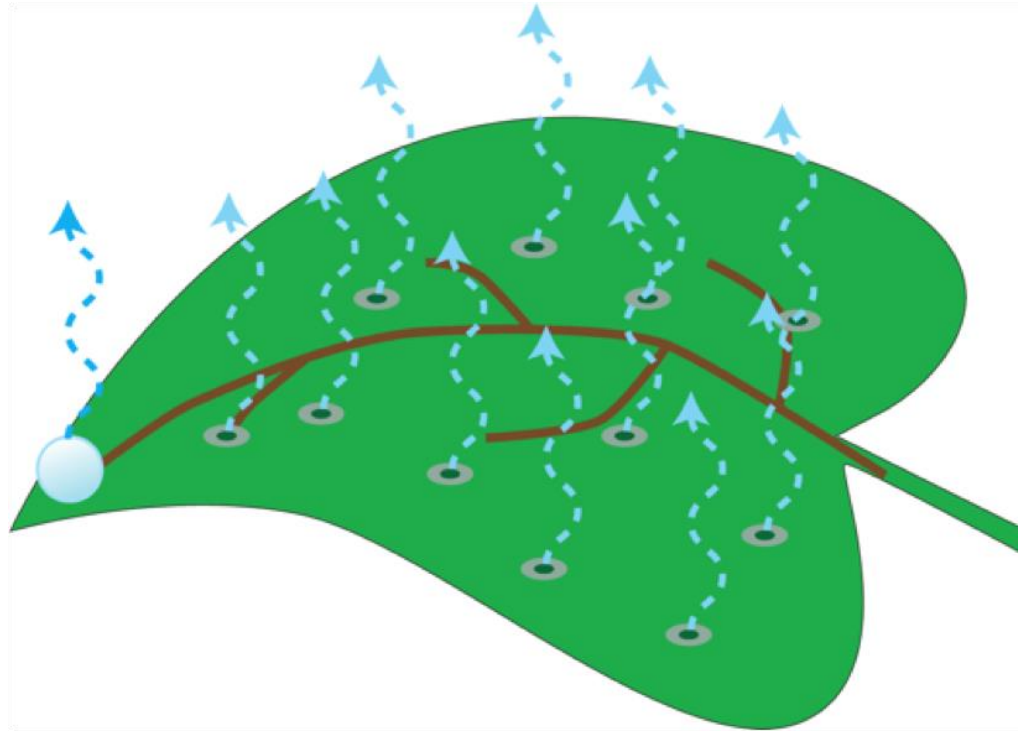
Venus Fly-trap  
eating a  
Grasshopper



Growth of a plant in response to physical contact.



# Transpiration



The movement of water from the roots of a plant through the stem and leaves and into the atmosphere via evaporation.